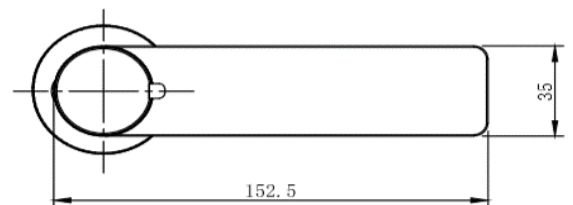
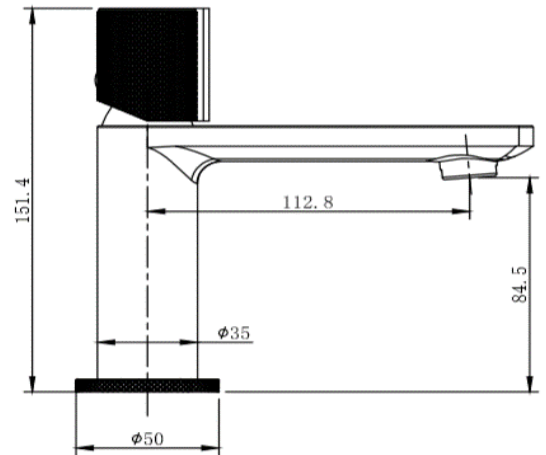


TECHNICAL DATA SHEET

ERLA05BB Basin Mono Mixer (Inc. Sprung Waste)

Barcode	-
Product Code	ERLA05BB
Construction	Brass Body (CuZn40Pb2), EN CW617N (equivalent to BS CZ122) Zinc alloy Handle
Finishes	Brushed Brass
Product Type	Contemporary
Water Pressure	Min. 0.5 bar, Max. 6.0 bar
Plumbing Systems	Suitable for all plumbing systems
Standards	Complies with BS6920, BS EN200
Certification	-
Cartridge	35mm Ceramic Disc Cartridge
Aerator	Spout Aerator
Fitting	UK: M10 x 350mm ½" BSP Female Flexi Tails EU: M10 x 350mm 3/8" BSP Female Flexi Tails
Packaging	46 x 28 x 34cm / carton (8 boxes), Dimension: 27 x 22 x 8cm / box; Weight: 1.35Kg / box
Guarantee	10 years against manufacturing faults (excluding serviceable parts)
Additional Information	Supplied with G1¼" sprung waste (UK only)



Flow Rates (Litres per minute)

System Pressure	0.1 Bar	0.2 Bar	0.3 Bar	0.5 Bar	1.0 Bar	1.5 Bar	2.0 Bar	3.0 Bar	4.0 Bar	5.0 Bar
ERLA05BB	2.1	2.9	-	4.4	6.0	-	8.5	10.4	-	13.4

The information contained on this page was correct at date of issue. Fitting dimensions are provided as a guide only. Some variation may occur due to manufacturing tolerances. We pursue a policy of continuing improvement in design and performance of our products and so reserve the right to change specifications without prior notice.