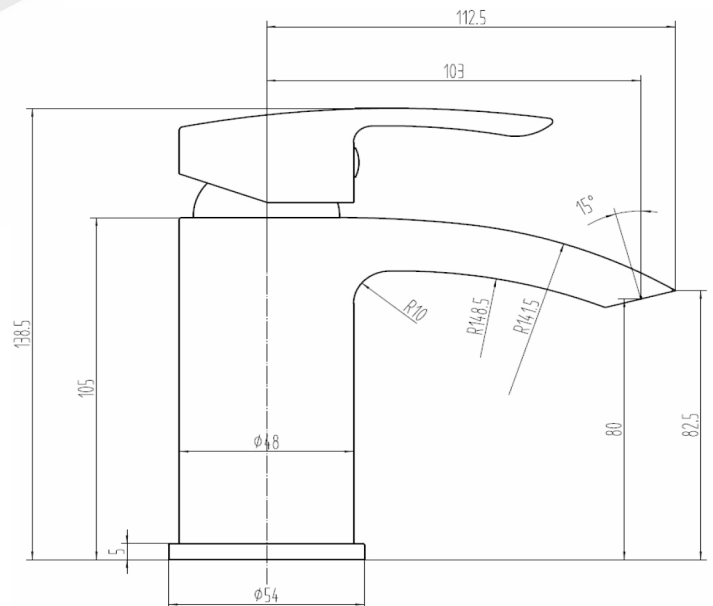


TECHNICAL DATA SHEET

TSHA05 Mono Basin Mixer (Inc. Sprung Waste)

Barcode	729557187599
Product Code	TSHA05
Construction	Brass Body CuZn40Pb2, EN CW617N (equivalent to BS CZ122) Zinc alloy Handle
Finishes	Chrome plated to BS EN 248
Product Type	Contemporary
Water Pressure	Min. 0.2 bar, Max. 6.0 bar
Plumbing Systems	Suitable for all plumbing systems
Standards	Complies with BS6920, BS EN200
Certification	WRAS approved and certified (1710044)
Net Weight (Tap only)	921g
Cartridge	35mm Ceramic Disc Cartridge
Aerator	Laminar spout
Fitting	UK: M10 x 350mm 1/2" BSP Female Flexi Tails EU: M10x350mm 3/8" BSP Female Flexi Tails
Packaging	35.5x26.5x42cm/carton(10pcs), Box size: 26x17x8cm, Weight: 1.5kg/pcs
Guarantee	10 years against manufacturing faults (excluding serviceable parts)
Additional Information	Supplied with G 1 1/4" sprung waste



Flow Rates (Litres per minute)

System Pressure	0.1 Bar	0.2 Bar	0.3 Bar	0.5 Bar	1.0 Bar	1.5 Bar	2.0 Bar	3.0 Bar	4.0 Bar	5.0 Bar
TSHA05	2.8	4.6	-	7.5	10.06	13.3	15.5	18.9	-	-